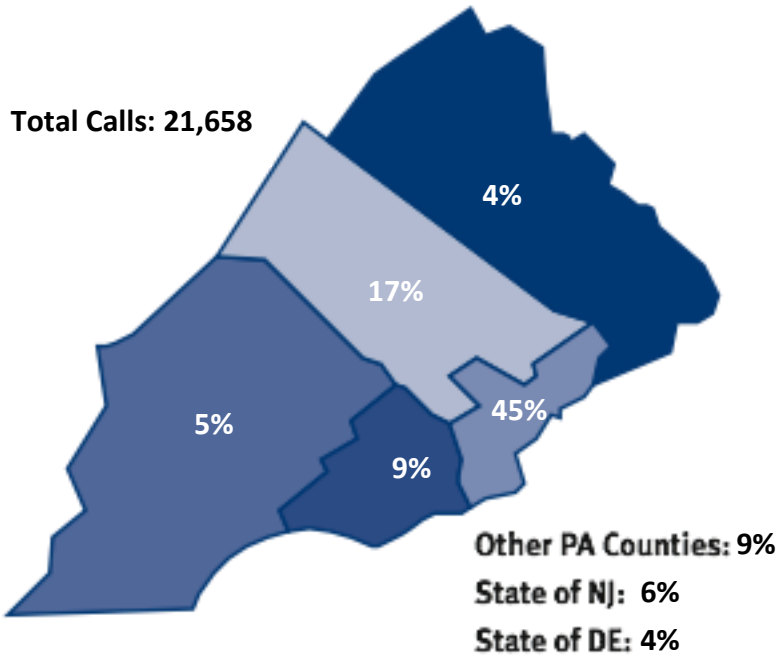


2-1-1 SEPA

January – December 2014



County	2014	2013	% Change
Bucks	818	610	34%
Chester	1,107	550	101%
Delaware	1,959	1,714	14%
Montgomery	3,639	1,497	143%
Philadelphia	9,833	9,046	87%
Total	17,356	13,417	29%

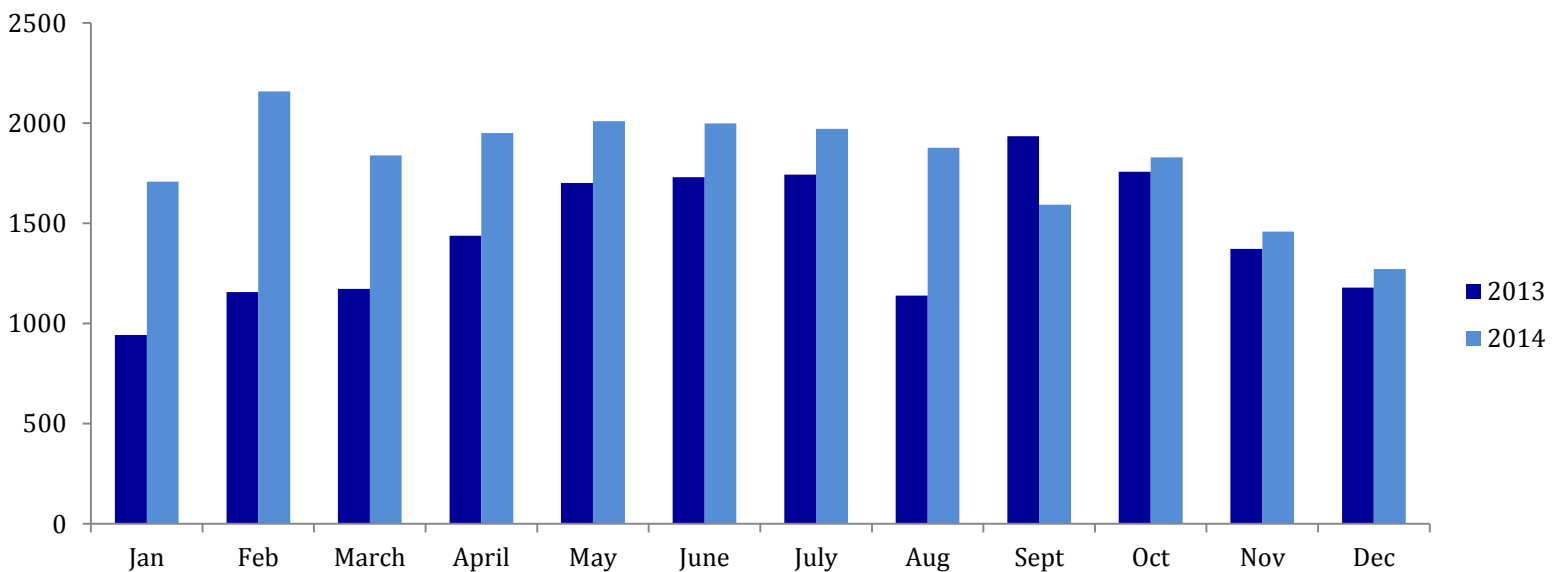
TOP SERVICE REQUESTS

Utility Assistance	34%
Housing Assistance	20%
General Human Services	14%
Food Resource	5%
Material Resources	3%

LATEST NEWS

In 2014, the 2-1-1 SEPA online database was accessed 19,361 times by over 13,000 users!

CALL VOLUME BY MONTH



For more information, please visit www.211sepa.org or email info@211sepa.org.